

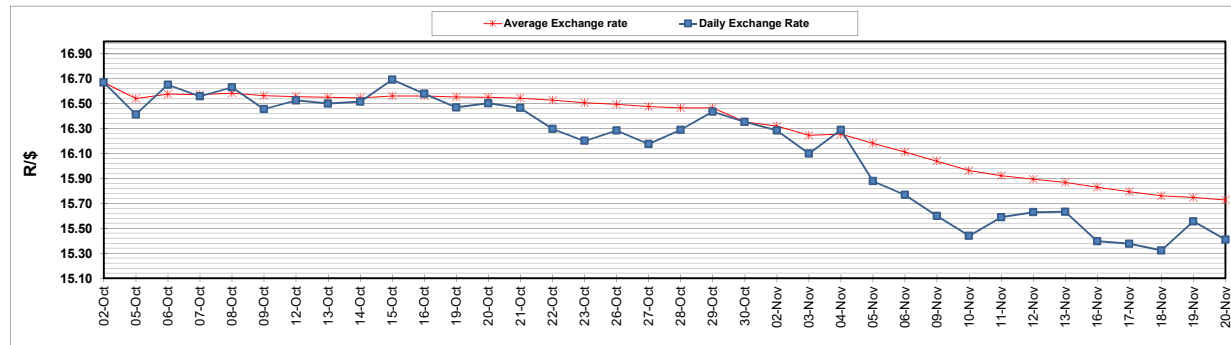
	PETROL 95 ULP	PETROL 93 ULP & LRP	DIESEL 0.05%	DIESEL 0.005%	ILL. PAR.
GAUTENG PUMP PRICE (SA c/l) AS FROM 04/11/2020	1,459.000	1,439.000	-	-	-
WHOLESALE PRICE (SA c/l) AS FROM 04/11/2020	-	-	1,225.560	1,227.960	655.828
SINGLE NATIONAL MAXIMUM RETAIL PRICE	-	-	-	-	818.000
BASIC FUEL PRICE - 20/11/2020 (SA c/l)	482.097	475.496	499.615	500.671	480.193
PRESS RELEASE CONTRIBUTION TO BFP 04/11/2020 - 20/11/2020 (SA c/l)	506.470	496.470	474.630	477.030	451.128
UNIT OVER/(UNDER) RECOVERY - 20/11/2020 (SA c/l)	24.373	20.974	(24.985)	(23.641)	(29.065)
AVERAGE BASIC FUEL PRICE 30/10/2020 - 20/11/2020	478.562	470.500	480.150	482.364	462.482
AVERAGE UNIT OVER/(UNDER) RECOVERY 30/10/2020 - 20/11/2020	32.971	31.033	(3.270)	(3.272)	(14.167)

ANALYSIS MOVEMENT OF AVERAGE OVER/(UNDER) RECOVERY

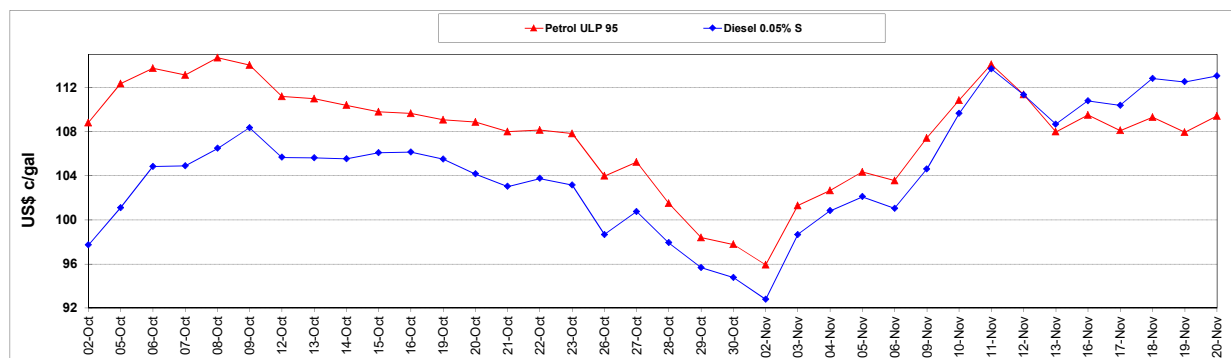
	PETROL 95	PETROL 93	DIESEL 0.05%	DIESEL 0.005%	ILL. PAR.
- MOVEMENT IN INTERNATIONAL PRODUCT PRICES	10.486	8.927	(25.829)	(25.934)	(35.895)
- MOVEMENT IN EXCHANGE RATE	22.485	22.106	22.559	22.663	21.729
AVERAGE UNIT OVER/(UNDER) RECOVERY 30/10/2020 - 20/11/2020	32.971	31.033	(3.270)	(3.272)	(14.167)

R/\$ EXCHANGE RATE - (R/\$15.4095 - 20/11/2020)

EXCHANGE RATE USED IN BASIC FUEL PRICE



INTERNATIONAL PRODUCT PRICES OF BASKET USED IN BASIC FUEL PRICE



BASIC FUEL PRICE IN SA CENTS PER LITRE

